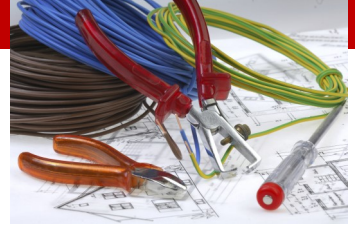


# Electrical Training Courses & Assessments:

## 15 Day FULL Electrical Installation.



### Course Overview:

This course covers all aspects of wiring activities similar to those you would find in domestic properties and contains the competences and skills you will require to seek employment within the electrical trade, starting with the basic fundamentals of Electrical Installation and finishing with FULL Industry Accredited Qualifications.

### Who is this training course for?

This course is aimed at both male and female candidates aged 16 years or above who wish to seek a career with the electrical trade. No prior experience is required to enrol onto this course.

### Course Duration:

15 days - This course can be run over 3 consecutive weeks (Monday to Friday - 9:00am to 5:00pm) or split over a 3 month period.



### Topic Areas Covered:

Week 1 / Session 1	<ul style="list-style-type: none"><li>◆ Relevant Health &amp; Safety.</li><li>◆ Electrical Principles.</li><li>◆ Electrical Processes.</li></ul>	<ul style="list-style-type: none"><li>◆ Wiring &amp; Installation Practices.</li><li>◆ Legislation.</li><li>◆ Portable Appliance Testing (PAT).</li></ul>
Week 2 / Session 2	<ul style="list-style-type: none"><li>◆ Building Requirements.</li><li>◆ Electrical circuit installation and testing.</li><li>◆ Ring mains and lighting circuit installation.</li><li>◆ Earth Bonding requirements.</li></ul>	<ul style="list-style-type: none"><li>◆ Special Locations.</li><li>◆ Inspection and surveying.</li><li>◆ Understanding 3 phase supply.</li></ul>
Week 3 / Session 3	<ul style="list-style-type: none"><li>◆ 17th Edition wiring regulations BS7671.</li><li>◆ Scope, object and fundamental principles.</li><li>◆ Definitions.</li><li>◆ Inspection &amp; testing.</li></ul>	<ul style="list-style-type: none"><li>◆ Special installations and locations.</li><li>◆ Assessment of general characteristics.</li><li>◆ Appendices.</li></ul>

### Training & Assessment methods:

Candidates will be assessed by a variety of methods throughout the course including observation, practical installation, self study guides, questioning and via online examinations.

### Course Achievements:

Successful candidates will receive LOGIC Domestic Installer certification, Level 3 QCF BS7671:2015 certification and Level 3 QCF ISITEE certification.