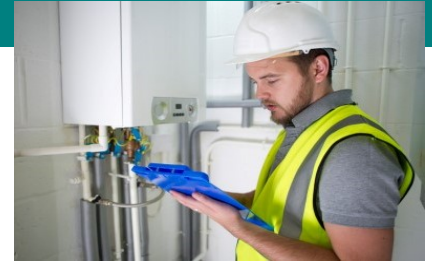


## Gas Training Courses & Assessments:

# LOGIC Essential Electrics & Boiler Fault Finding.



### Course Overview:

This course is designed to expand the knowledge of the electrical aspects of central heating systems and boilers and to provide basic knowledge of electrical installation skills, understanding of circuitry and a logical approach to fault finding using a multi-meter.

### Who is this training course for?

This course is designed for existing plumbing and heating installation engineers who hold valid CCN1 and CEN1 certification.



### Course Duration:

2 days - 8:30am to 4:00pm.

### Topic Areas Covered:

- ◆ The basics of electricity.
- ◆ Practical fault finding on live boilers.
- ◆ Domestic house wiring theory including typical domestic wiring circuits, earthing, safety and isolation of systems.
- ◆ Central heating control systems (S Plan and Y Plan) and their functions.
- ◆ Using a logical approach for identifying and rectifying electrical faults on gas appliances.
- ◆ Using a multi-meter to identify working and defective components like fans, air pressure switches, pumps, thermostats, gas valves and much more.

### Training & Assessment methods:

This course involves a significant amount of hands-on practical training supplemented by the theoretical aspect of essential electrics and fault finding.

### Course Achievements:

Successful candidates will receive LOGIC Essential Electrics and Boiler Fault Finding certification and qualification.